

# PLC130 LAB 2.1: PERIODIC TASKS

Student Name: \_\_\_\_\_

Student ID: \_\_\_\_\_

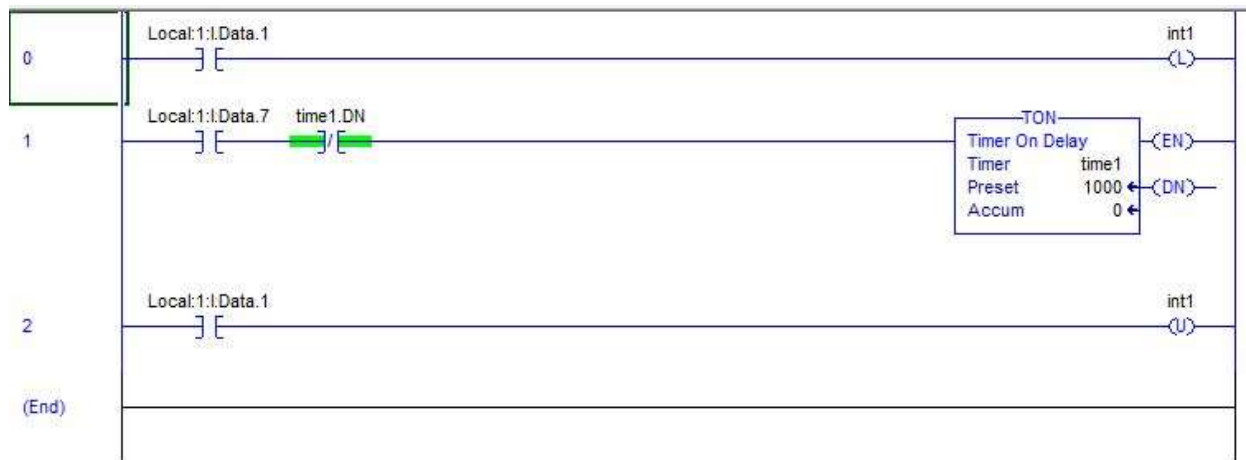
## LAB OUTCOMES:

1. Explain various tasks found in the controller organizer window
2. Explain how to change the parameters for a continuous task
3. Explain how to create a new periodic task
4. Explain how to change the parameters for a periodic task

## LAB PROCESS:

Download the project “Compact\_Module\_5\_Ex1\_Periodic\_Task.ACD” file, go online and put the CompactLogix into RUN mode.

### Part 1



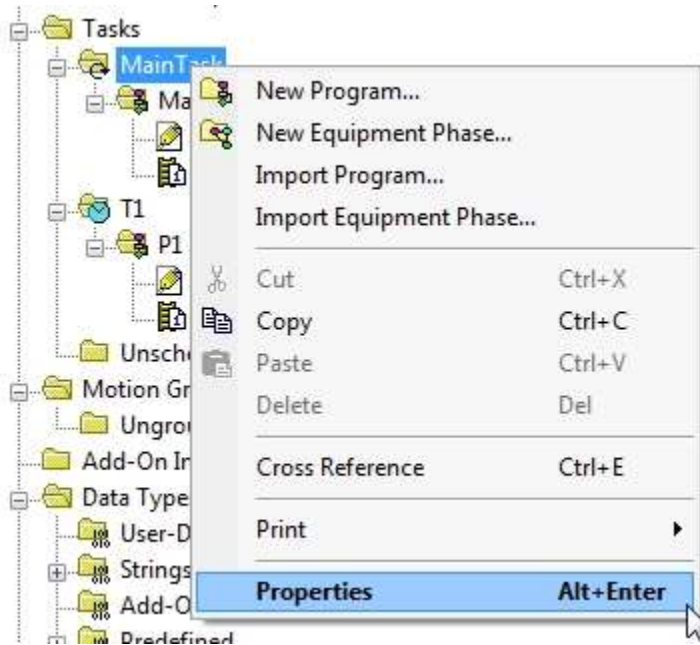
1. Monitor the MainRoutine

Does SS7 start the time1 Timer?

Is the logic running in the MainRoutine?

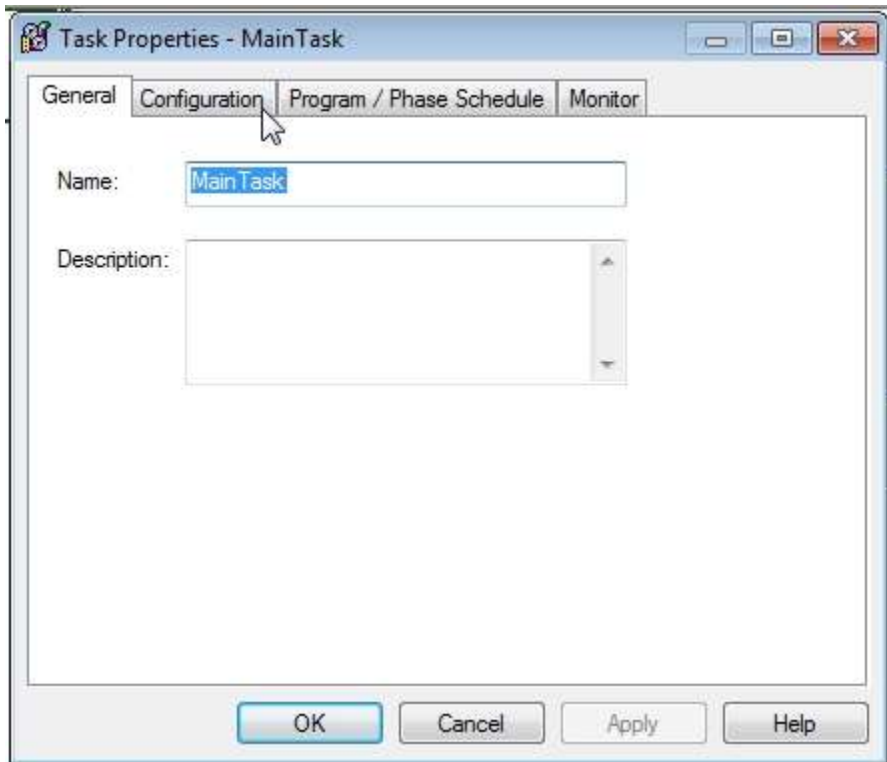
2. What type of Task is the MainTask?

Hint: Right Mouse Click on the Properties selection for MainTask.

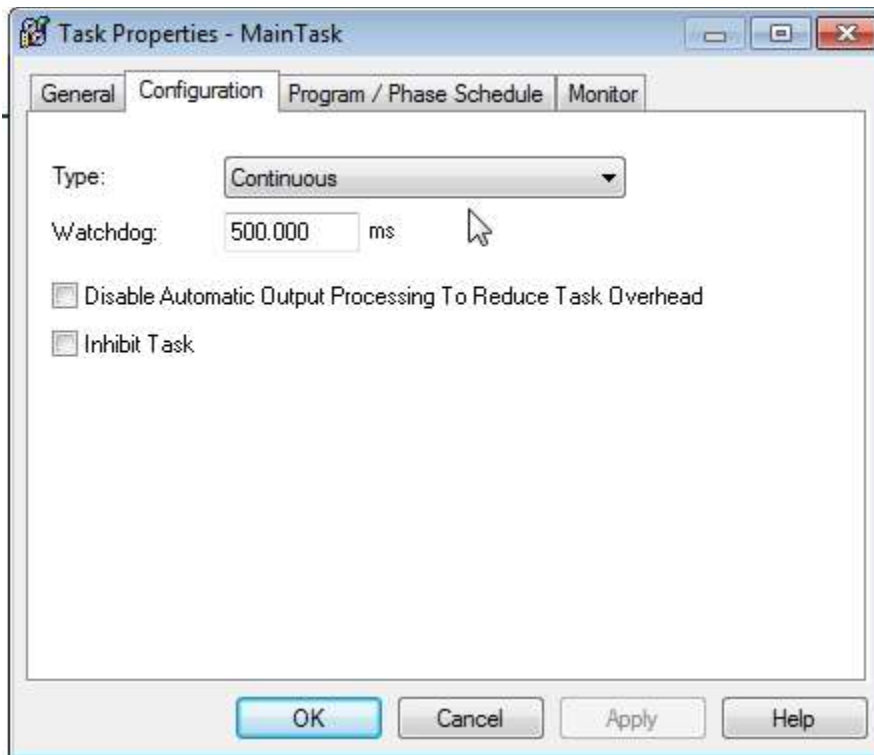


Note: Icon for MainTask

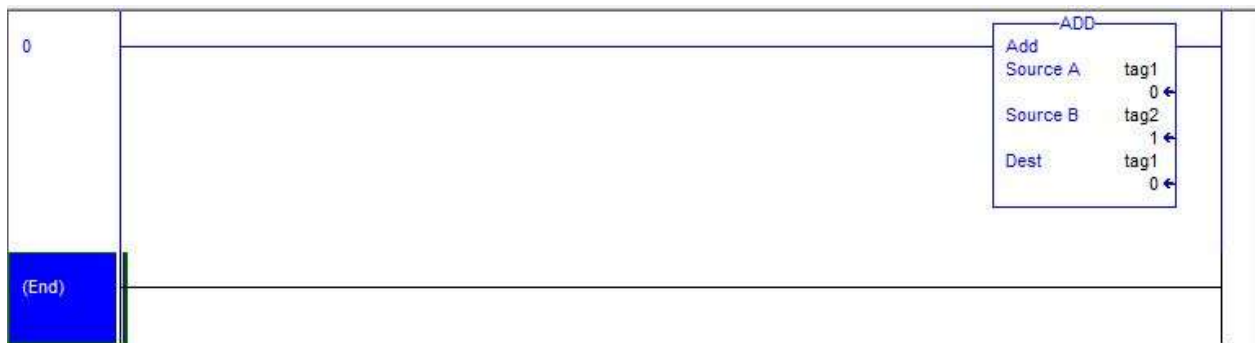
Left Mouse Click on the Configuration tab



View Type information



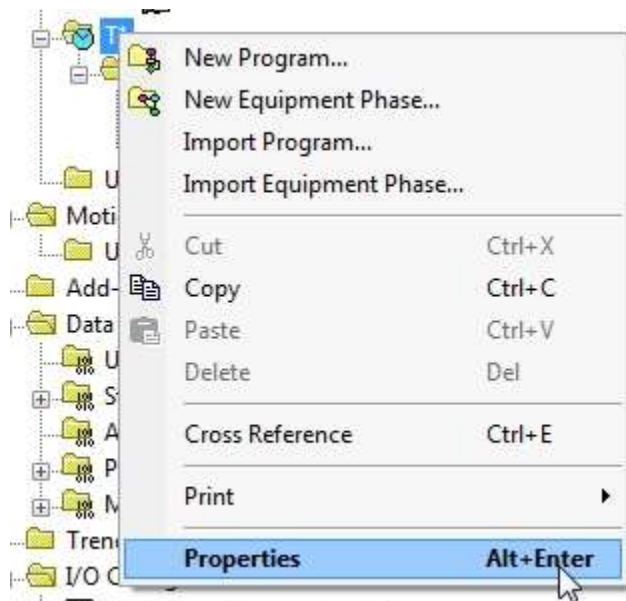
3. Monitor the R1 routine.



Is the logic running?

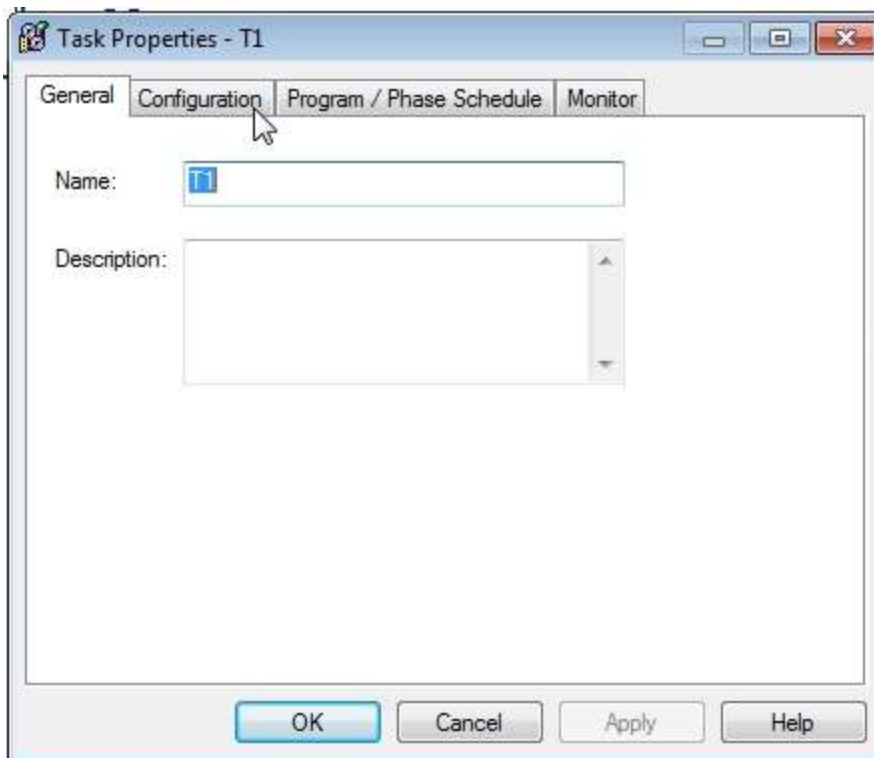
4. What type of Task is T1

Hint: Right Mouse Click on the Properties selection for T1 task.

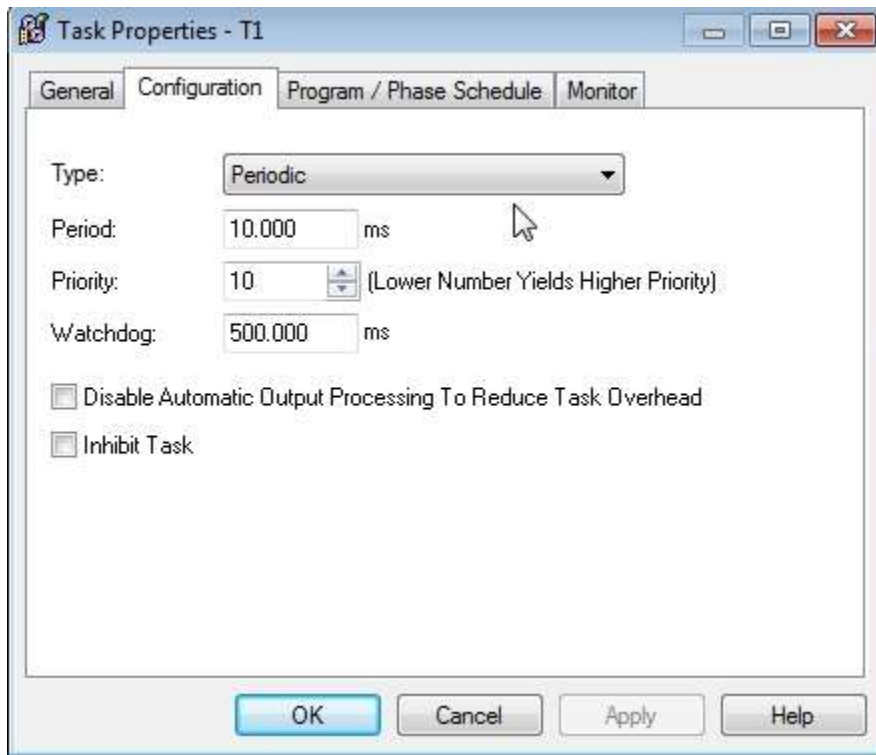


Note: Icon for T1 task

Left Mouse Click on the Configuration tab



View Type information



What is the Period setting for the T1 task?

What is the Priority setting for the T1 task?

At what rate is the Tag1 in the R1 routine changing values?

(Fast or Slow)

5. Change the Period setting on the on the T1 Configuration tab to 1000.

At what rate is the Tag1 in the R1 routine changing values?

Is the logic in the MainRoutine being scanned?

6. Change the Period setting on the on the T1 Configuration tab to 10000.

At what rate is the Tag1 in the R1 routine changing values?

Is the logic in the MainRoutine being scanned?

7. Explain how often are the routines in Periodic Tasks are scanned?

*The outcomes of this exercise (listed on page 1) specifies the skills that the Student must demonstrate to the Instructor. Once the Instructor is satisfied with the demonstration of Knowledge & Skills by the individual student, they will sign this document (for the student), then enter a 100% into the Hands-On Lab grade in Sakai.*

I verify that this student has completed all of the requirements of this Hands-On Assessment:

Student Name: \_\_\_\_\_

Faculty Signature: \_\_\_\_\_ Date: \_\_\_\_\_

**DOL DISCLAIMER:**

This product was funded by a grant awarded by the U.S. Department of Labor's Employment and Training Administration. The product was created by the grantee and does not necessarily reflect the official position of the U.S. Department of Labor. The Department of Labor makes no guarantees, warranties, or assurances of any kind, express or implied, with respect to such information, including any information on linked sites and including, but not limited to, accuracy of the information or its completeness, timeliness, usefulness, adequacy, continued availability, or ownership.



This work is licensed under a [Creative Commons Attribution 4.0 International License](https://creativecommons.org/licenses/by/4.0/).